



geodyna[®] 8250-2P



PREMIUM SERVICE BALANCER

ENGINEERING UNLEASHED™

WHEEL BALANCER WITH NON-CONTACT DATA ENTRY AND DIAGNOSTIC FUNCTIONS

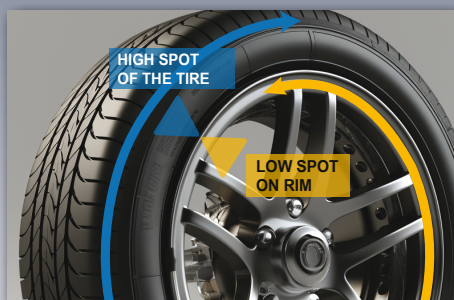
The geodyna® 8250-2P balancer is an exceptional choice for workshops looking to enhance functionality and increase revenue. This fully automated wheel balancing system is capable of detecting weight and shape imperfections, including potential steering wheel vibrations, which is crucial for modern vehicle maintenance. Advanced capabilities, such as identifying rim diameter and offset distance selecting the appropriate balancing mode, weight type, and placement without human intervention, the 8250-2P simplifies the process. It also features a built-in wheel lift that raises the wheel to the desired height. Utilising easyWeight™ technology, it provides precise laser guidance for ideal weight positioning, while the Split Weight Mode enables discreet balancing for high-performance wheels.

Equipped with wheel measurement scanning, automated spoke identification, and the innovative electromechanical Power Clamp™, this balancer ensures exceptional precision and efficiency. The geodyna® 8250-2P wheel balancer offers superior features and state-of-the-art diagnostics, enabling workshops to deliver flawless wheel balancing with ease and accuracy, while maximising productivity and profitability.



FULLY AUTOMATIC

Experience next-level wheel balancing with this fully automatic wheel balancer that automatically detects wheel dimensions and selects the appropriate balancing mode, weight type, and weight position, eliminating the need for manual input.



MATCH MOUNTING

Employing sophisticated techniques, this process optimises the assembly of the tyre onto the rim, reducing the need for excessive weight addition. By achieving a more balanced distribution, it enhances overall performance and minimises potential vibrations.

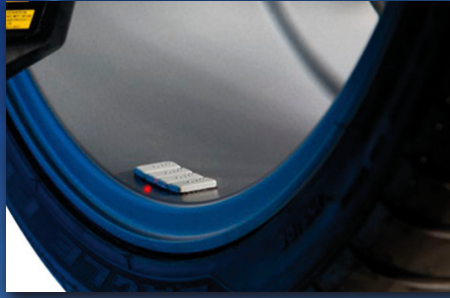


RADIAL AND LATERAL RUNOUT

Wheel imbalance can occur due to various factors, such as uneven distribution of mass, imperfections in the wheel or tyre, as well as irregularities in the tyre tread. This advanced system offers a thorough assessment of the assembly uniformity, providing precise measurements of both radial and lateral runout and identifying potential wheel assembly issues while pinpointing balancing discrepancies.

EASYWEIGHT™

Streamlining weight placement, this precision-focused system eliminates guesswork. It employs a laser to precisely indicate the exact location for weight application, ensuring meticulous balancing and accurate results.



POWER CLAMP™

Utilising advanced electromechanical technology, this balancer incorporates a power clamping device that consistently and reliably secures the wheel with a constant force. This ensures exceptional accuracy and repeatable results every time.



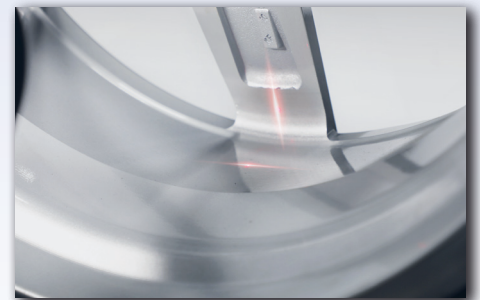
SMARTSONAR™

This intelligent system utilises sonar sensors to automatically detect the rim width, eliminating the need for manual input and reducing the possibility of errors. By streamlining the process, it enhances efficiency and accuracy.



TOUCHSCREEN INTERFACE

Boasting a rapid and intuitive interface, this system incorporates a large touchscreen display with easy-to-read digits. Additionally, coloured weight position indicators enhance speed, ease-of-use, and overall ergonomics, facilitating daily operations.



AUTOMATIC SPOKE DETECTION

A laser scanner automatically detects the number and position of rim spokes, guiding optimal weight placement behind them for precise balancing with split weights.

SEMI-AUTOMATIC DATA ENTRY

Equipped with a user-friendly gauge arm, this system facilitates data entry with easyALU™ assisted rim measurement technology. Technicians simply touch the rim with the gauge arm, and the system automatically enters the rim dimensions and selects the appropriate weight-balancing mode.

SPLIT WEIGHT MODE

This feature ensures accurate balancing and discreet weight concealment behind spokes, maintaining the wheel's aesthetic appeal and visual presentation.

REPORT

Easily generate reports on the local network (additional hardware required) or save as PDFs on a flash drive, facilitating convenient sharing of detailed information with customers for documentation or reference.

THE ULTIMATE IN PRODUCTIVITY AND PERFORMANCE



8200-2P

Version without wheel lift



STOP IN POSITION

By simply touching the screen, users can prompt the system to automatically rotate the wheel to the precise position for weight application. This convenient feature streamlines the process and enhances operational efficiency.



EV READY

OPTIMISED FOR EV WHEELS

Optimise balancing wheels, including EV, with the latest technology and precise engineering.



RIM LIGHTING

Equipped with a powerful LED lighting system, this balancer ensures optimal illumination of the rim. This feature aids in rim cleaning and significantly assists in the precise positioning of weights, ensuring a seamless balancing process.

TECHNICAL SPECIFICATIONS

Automatic Rim Diameter Range	14" - 26" 35,5 - 66cm
Automatic Rim Width Range	3" - 15,8" 7,6 - 40cm
Manual Rim Diameter Range	8" - 32" 20,3 - 81,2cm
Manual Rim Width Range	1" - 20" 2,54 - 50,8cm
Max Wheel Diameter	42" 106,6cm
Max Wheel Weight	154 lbs. 70kg
Power Supply	230V 1ph 50-60Hz
Dimensions HxWxL	61"x 40"x 76" 157x102x194cm

STANDARD ACCESSORIES

Conical flange and electro-mechanical Power Clamp™ device, Drum, drum cushion, 3 cones (1,7-3,2" | 42-80mm), (2,8-3,9" | 72-99mm), (3,8-4,6" | 96-116mm) dia.; Universal weight pliers, adhesive weight removing tool, 4 Storage pegs on left-hand side of machine

VERSION DIFFERENCES

8250-2P - All features
8200-2P - does not include wheel lift

FIND A DISTRIBUTOR

AUSTRIA
+43 2641 24524

FRANCE
+33 134 48 58 78

GERMANY
+49 8671 96200 0

ITALY
+39 0522 733 411



Snap-on® Total Shop Solutions offers a wide range of garage equipment solutions for workshops, garages, car dealers and tyre shops, thanks to the specific solutions provided by its portfolio of premium brands. Hofmann® is a brand of TSS and is committed to product innovation and improvement. Therefore, specifications listed in this sell sheet may change without notice. ©2025 Snap-on Incorporated. Hofmann® is a trademark, registered in the United States and other countries, of Snap-on Incorporated. All rights reserved. All other marks are marks of their respective holders. sswb23012a (EU en) 8/2025



HOFMANN-EQUIPMENT.COM

HOFMANN